



# Computer Quiz Instruction Manual

Computer Quiz.....	2
Introduction.....	2
Requirements .....	2
Licence .....	2
Author .....	2
Acknowledgements.....	2
Introduction and Quick Start Guide.....	3
Selecting the Quiz .....	4
Main Quiz Screen .....	5
Test Complete .....	6
The Report .....	7
Additional Information .....	8

---

# Computer Quiz

---

## Introduction

Computer Quiz is a program designed to read and display multiple-choice computer quiz files created with Computer Quiz Writer and produce a test report text file. The report shows: the name of the quiz file, name of the person taking the test, question number, correct answer, answer given during test, number of correct and incorrect answers, percentage score and the time and date the test was completed.

The program is simple and easy to use. Please take a little time to read the instruction manual in order to get the most out of the program.

## Requirements

Windows® 9x, Me, 2000, NT, XP.

## Licence

This software is provided as Freeware on an *as is* basis, without any express or implied warranty. In no event shall the author be liable for any claim, damages or other liability, arising from, out of, or in connection with the software or the use or other dealings in the software.

The author herewith gives permission to use the software and its documentation free of charge.

## Author

Author: George Jopling  
Doncaster, UK  
Website: <http://www.georgejopling.co.uk>

Computer Quiz. version 2.5.2.0 November 2005 © George Jopling  
Instruction Manual version 2.5.2.0 November 2005 © George Jopling

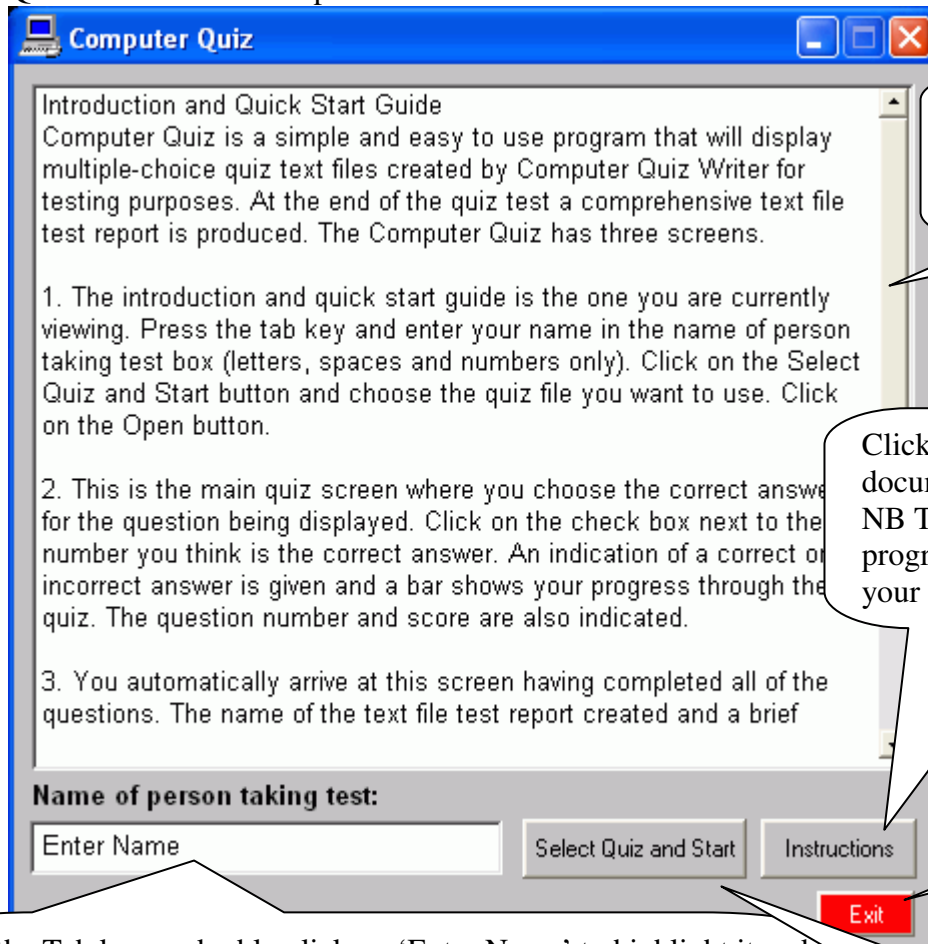
## Acknowledgements

Thank you to Granot for the basic code sample. The quiz was built using Multimedia Builder ©Media Chance. The installation program was built with NSIS ©Nullsoft. The installation script was written using HM NIS Edit ©Hector Mauricio Rodriguez Segura. Thank you to Andrew for testing the program.

All trademarks acknowledged. E&OE.

## Introduction and Quick Start Guide

The Computer Quiz program is made up of three screens. The first is the Introduction and Quick Start Guide as explained below.



Introduction and Quick Start Guide. Use the scroll bar to view to the bottom.

Click here to view a PDF document Instruction Manual. NB The free Adobe Reader program must be installed on your computer to view it.

Click to exit the quiz at any time

Press the Tab key or double-click on 'Enter Name' to highlight it and then type your name in this box. This will be the name of the text file test report. Please follow standard file naming conventions by using upper and lower case letters, spaces and numbers. You could add a number after your name if you take the test more than once, for example. DO NOT use characters such as . / \ % \$ \* + = etc.

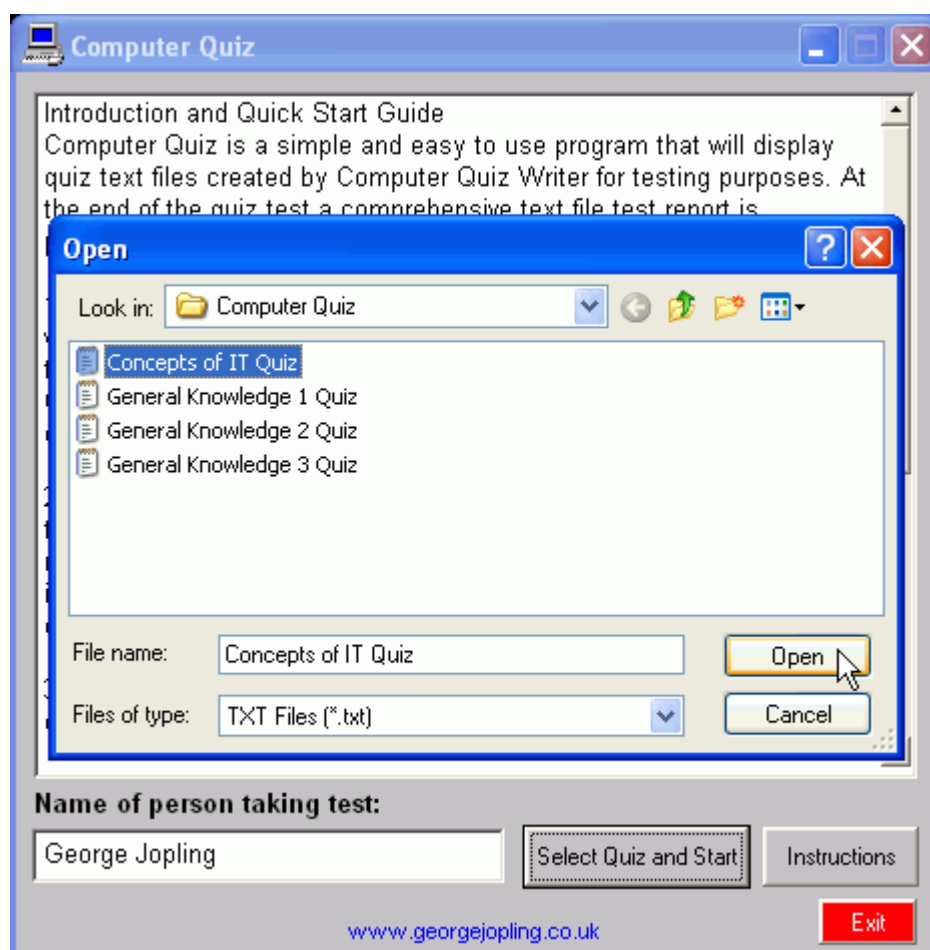
Click on the Select Quiz and Start button after you have entered your name.



If the name you entered into the Name box already exists you will see this message box. Use another name e.g. George Jopling 2 or rename/delete the existing file in the C:\Program Files\Computer Quiz directory.

## Selecting the Quiz

Select the quiz you want to use and click on the Open button.



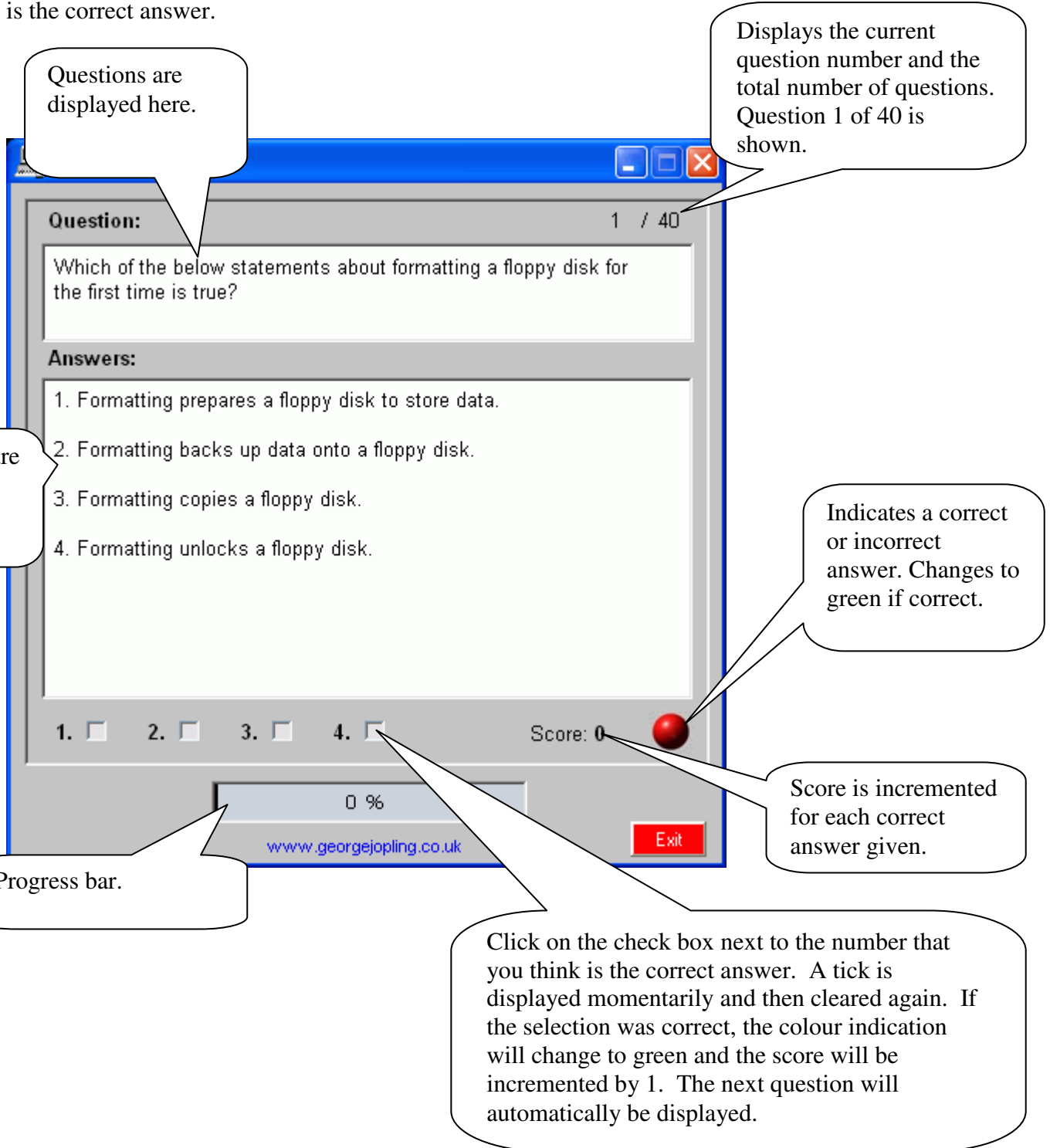
Only quiz files with the word Quiz as part of the filename are shown as being available. For example, a file called Sample.txt will not be shown. A file called Sample Quiz.txt will be listed. All quiz files created with George's Computer Quiz Writer have the word Quiz added to the file name automatically.

The Computer Quiz program carries out error checking of the quiz text files. If the quiz text file you have selected is not correctly formatted, an error message number will be displayed and the program will then close. Please see the Additional Information section of this manual for further details about the error codes.

Please use the Computer Quiz Writer program to create the quiz text files.

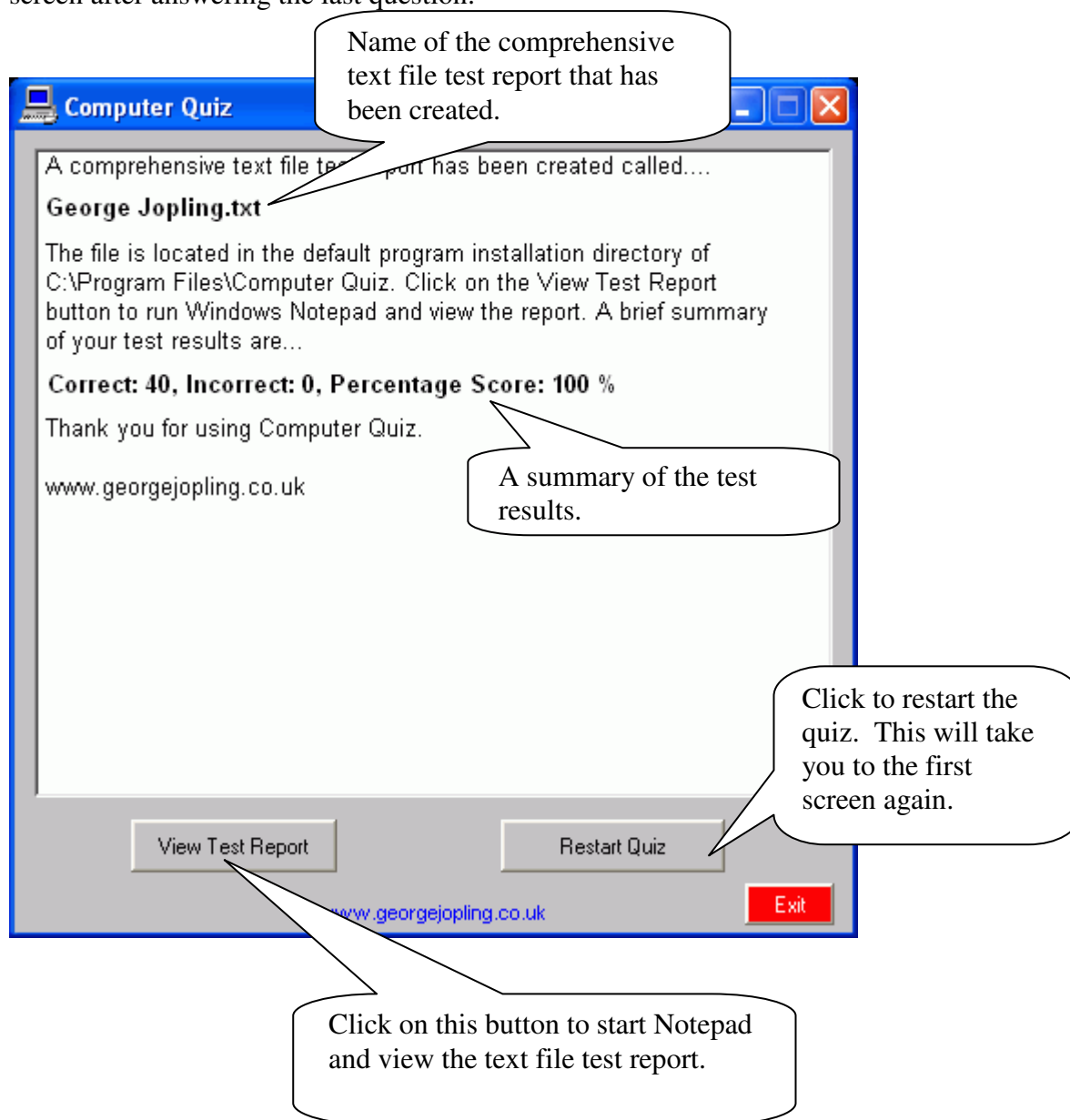
## Main Quiz Screen

The second screen display is the actual quiz itself as explained below. The question is displayed at the top and there are four numbered possible answers shown below. Beneath these are four numbered check boxes. Click on the check box next to the number you believe is the correct answer.



## Test Complete

The third and final screen is displayed at the end of the quiz. You automatically arrive at this screen after answering the last question.



## The Report

A Comprehensive text file test report is produced at the end of the quiz. Note that the text file has the name George Jopling. This was the name entered into the Name box at the start of the quiz. The default text file extension of '.txt' is automatically added by the program.

The report shows:

Question number, correct answer and the answer given during the test.

Name of the quiz taken. The Concepts of IT Quiz.txt file is shown on this report

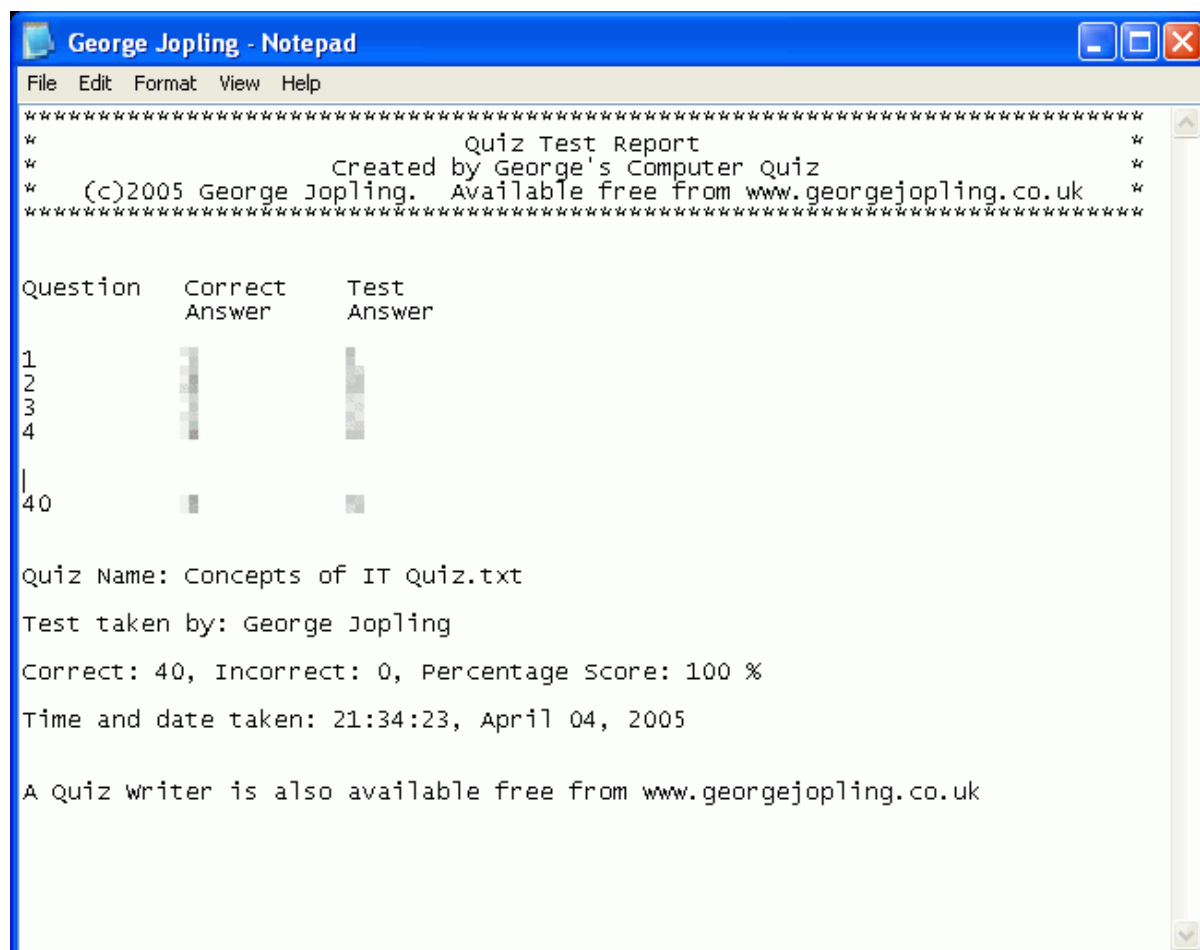
Name of the person taking the test - as entered in the Name box at the start.

The number of correct and incorrect answers along with a percentage score.

Time and date the test was completed.

Simply click on File and then Print to print out your test report.

The example report has been abbreviated and answers hidden on the below screenshot. The file produced by this 40 question quiz would clearly show all 40 answers of course.



```
George Jopling - Notepad
File Edit Format View Help
*****
*                               Quiz Test Report                               *
*                               Created by George's Computer Quiz              *
*                               (c)2005 George Jopling. Available free from      *
*                               www.georgejopling.co.uk                         *
*****

Question   Correct   Test
           Answer   Answer

1
2
3
4
|
40

Quiz Name: Concepts of IT quiz.txt
Test taken by: George Jopling
Correct: 40, Incorrect: 0, Percentage Score: 100 %
Time and date taken: 21:34:23, April 04, 2005

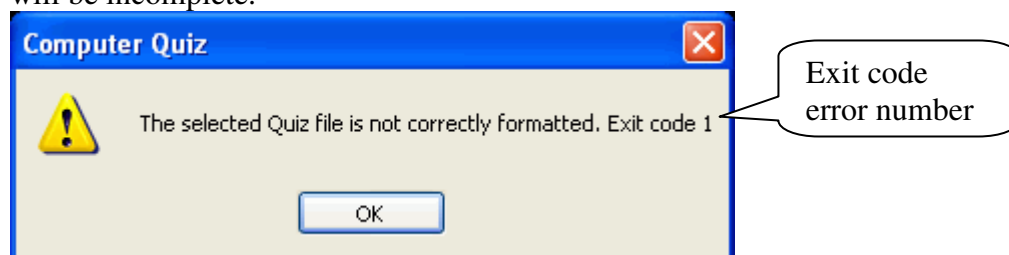
A quiz writer is also available free from www.georgejopling.co.uk
```

## Additional Information

The file is placed in the default program installation directory, which is C:\Program Files\Computer Quiz, unless you changed this during installation. It will have the name you entered in the Name box at the beginning of the quiz. For example, if you entered George Jopling in the Name box a file called George Jopling.txt will be created in the C:\Program Files\Computer Quiz directory. It can be copied, deleted, renamed or moved like any other Windows text file.



The text file is created after clicking on the Start Quiz button. Each time that you answer a question, the results are written to the file. If you exit the quiz before it is finished, the report will be incomplete.



If an error is detected in the selected quiz file it will cause the program to display an exit code number and then exit. The four exit code numbers and likely causes are:

Exit code 1

The text file is not a correctly formatted quiz text file or the number of questions is not a valid number.

Exit code 2.

The correct answer number is invalid, incorrectly positioned or the quiz file is incomplete.

Exit code 3.

Lines are missing or the the quiz file is incomplete.

Exit code 4.

The total number of questions is incorrect.

The progress bar gives a whole number percentage of how far you are in completing the test.

The quiz result percentage is expressed to one decimal place e.g. an exact result of 38.461538... (5 questions correct out of 13) is shown as 38.5%.

If you do spot any errors or bugs, please report them via the Contact Me form on my website. <http://www.georgejopling.co.uk>

Computer Quiz does not contain any spyware or advertising.

Enjoy the quiz program. If you have any comments about the program, please let me know.